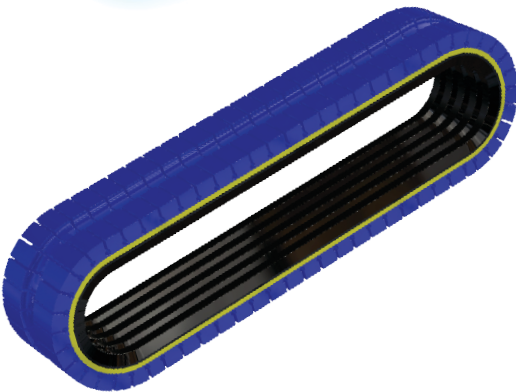
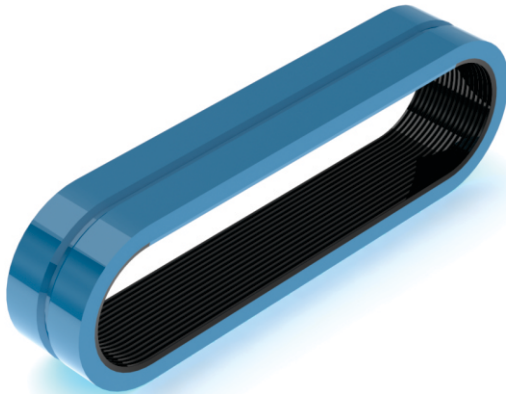
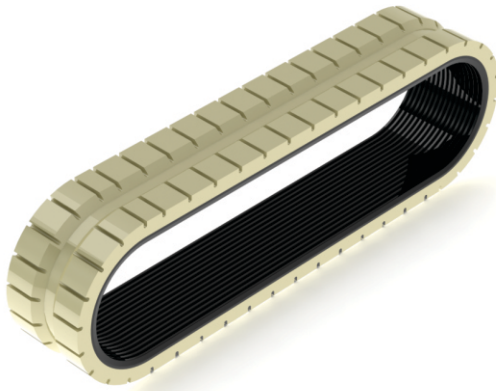




Invention & Innovation

**NITTA**

## Haul Off/Puller Seamless Belting



# Extrusion Industry

## Product Line

CCB NBR50 WT

50 DURO SHORE A  
NON MARKING  
EXCELLENT GRIP  
OIL RESISTANT

CCB NR40 BLU

40 DURO SHORE A  
HIGH STRENGTH AND ABRASION RESISTANCE  
NON-MARKING  
EXCELLENT GRIP

CCB NR70 GY

70 DURO SHORE A  
VERY HIGH TENSILE STRENGTH  
EXCELLENT ABRASION RESISTANCE  
NON-MARKING

CCB EPM60 BK

60 DURO SHORE A  
PERFORMS WELL UNDER HIGHER TEMPERATURE  
COST EFFECTIVE

CCB NR70 BK

70 DURO SHORE A  
HIGH ABRASION RESISTANCE  
ANTI PILLING

CCB SBR70 YE

70 DURO SHORE A  
EXTREMELY HIGH TENSILE  
ABRASION RESISTANCE

CCB SIL50 WT FDA

50 DURO SHORE A  
HIGH TEMPERATURE  
HIGH RELEASE

CCB NBR35 WT

35 DURO SHORE A  
EXCELLENT GRIP  
NON MARKING  
OIL RESISTANT

## Product Details

	CCB NBR50 WT	CCB NR40 BLU	CCB NR70 GY	CCB EPM60 BK	CCB NR70 BK	CCB SBR70 YE	CCB SIL50 WT	CCB NBR35 WT
HIGH RELEASE							X	
FDA							X	X
ABRASION	E	E	E	G	E	E	G	G
THICKNESS*	UP TO 1"	UP TO 1"	UP TO 1"	UP TO 1"	UP TO 1"	UP TO 1"	UP TO 1"	UP TO 1"
COLOR	WHITE	BLUE	GREY	BLACK	BLACK	YELLOW	WHITE	WHITE
<b>ADHERES TO</b>								
URETHANE	X	X	X	X	X	X	X	X
RUBBER	X	X	X	X	X	X	X	X
FLAT BELT	X	X	X	X	X	X	X	X
TIMING BELT	X	X	X	X	X	X	X	X
POLY / MICRO VEE	X	X	X	X	X	X	X	X
BANDED VEE	X	X	X	X	X	X	X	X
PLASTIC / NYLON	X	X	X	X	X	X	X	X

P = POOR F = FAIR G = GOOD E = EXCELLENT  
\*CALL FOR THICKER REQUIREMENTS

## Features & Benefits

Seamless - No Splice  
 Thermal Bonding - No Cover Delamination  
 Bi-Directional - Precision Ground Covers  
 Engineered From Design to Completion  
 Custom Covers - Profiling/Indexing/Grooving

Nitta Corporation of America  
 7605 Nitta Drive, Suwanee, GA 30024  
 P 770-497-0212, TF 800-221-3689, F 770-623-1398  
[www.nitta.com](http://www.nitta.com)